



WRIGHT JENKINS
HOME DESIGN



From Preliminary Design to Permit Ready in

FIVE TASKS

[NEXT PAGE]



WRIGHT JENKINS HOME DESIGN

offers

Preliminary Design to Permit Ready

FIVE TASKS

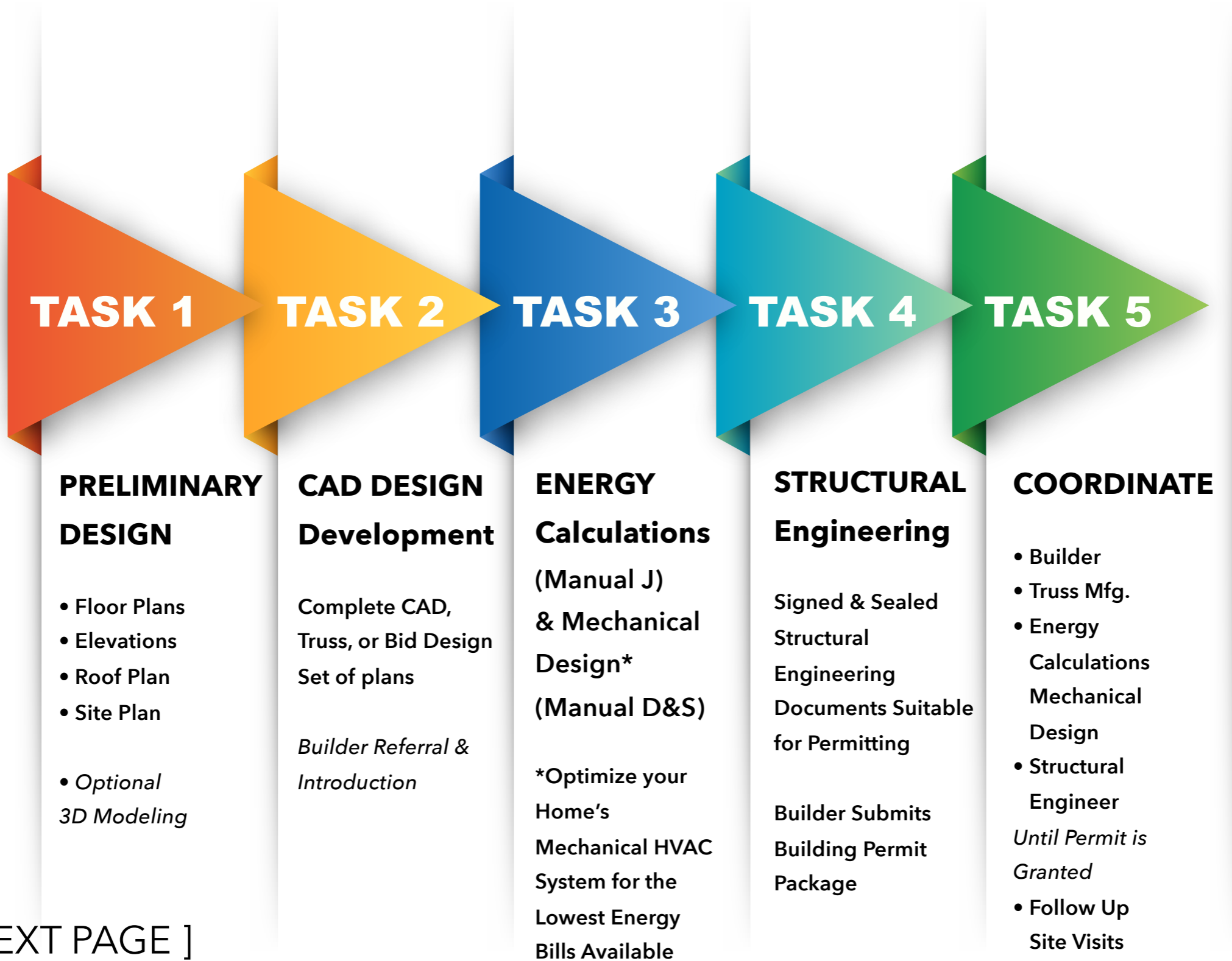
**TO OBTAIN A BUILDING PERMIT
FOR SW FLORIDA CUSTOMERS**

[NEXT PAGE]

FIVE TASKS TO CONSTRUCTION-READY

START

FINISH



[NEXT PAGE]

PRELIMINARY DESIGN

WJHD requests customers supply a recent lot survey before Task 1 begins.

All set backs, easements and other restrictions must be known so that a realistic building footprint can be identified.

TASK 1A

Includes Scaled Drawings of the following:

- Floor Plans
- Elevations
- Roof Plan
- Position floor plan on the lot survey in a preliminary site plan.



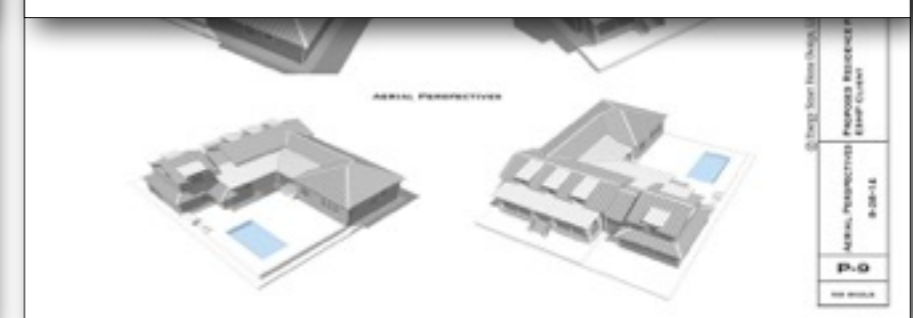
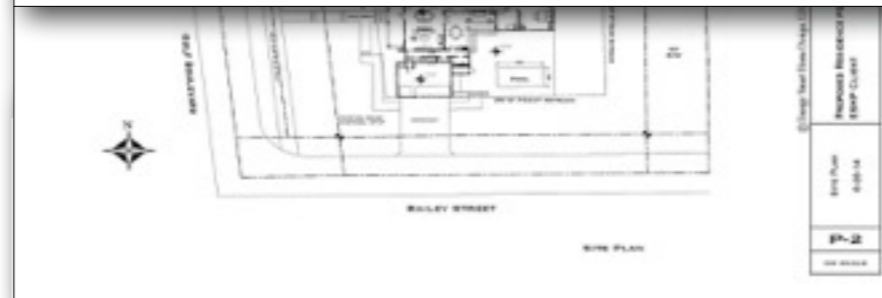
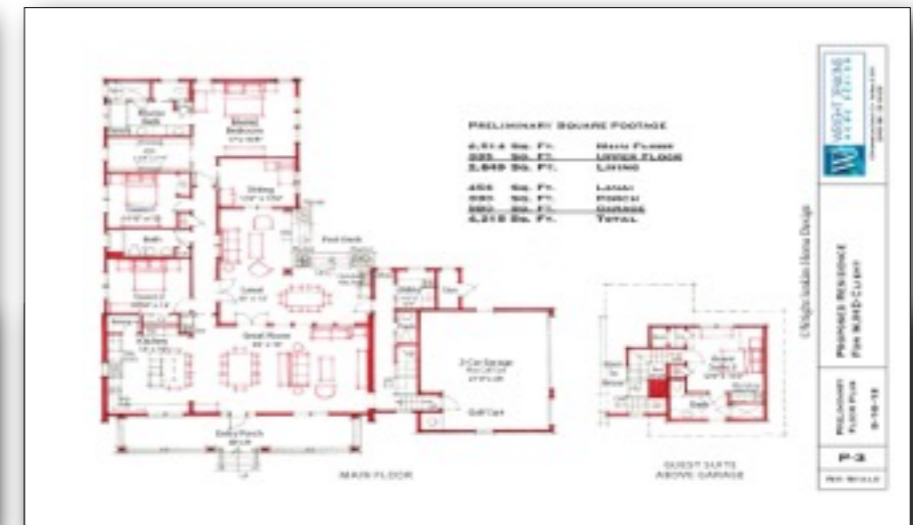
(Preliminary Design Set)

*Custom Design may include
Optional 3D SketchUp Modeling*

[NEXT PAGE]

PRELIMINARY DESIGN SET

TASK 1B



(Shown with optional 3D Sketch-UP Modeling)

[NEXT PAGE]

CAD DESIGN DEVELOPMENT

(Truss or Bid Design Set of Plans)

TASK 2A

Includes:

- Cover Sheet/Index
- Site Plan
- Wall Sections and Details
- Foundation Plan/Plumbing location Layout
- 2nd Floor Framing if applicable
- Floor Plans (*Dimensioned and Callouts*)
- Reflected Ceiling Plans
- (4) Elevations
- Roof Plan with Dropped Soffit Layout (*For Ducts in Conditioned Space*)
- Building Section & Details
- Interior Elevations - Kitchen, Baths, Laundry
- Electrical Plans

[NEXT PAGE]

CAD DESIGN DEVELOPMENT

(Truss or Bid Design Set of Plans)

TASK 2B

We're happy to refer our customers to select Building Professionals, or We can also work with your chosen builder.

- With the WJHD Truss Set builders can provide you with a Preliminary Bid to construct your home.
- Once you and your builder agree to proceed, the builder forwards the WJHD set of plans to the chosen truss manufacturer for Truss Engineering.*

**Builder Supplied Truss Engineering drawings must be part of the Structural Engineering Package, required to obtain a Building Permit in Florida.*

[NEXT PAGE]

ENERGY CALCULATIONS

(and Mechanical HVAC Design*)

TASK 3

- Energy Calculations are required to obtain a Building Permit in Florida. In order to accomplish this task, WJHD contracts a third party Building Science Professional.

**We recommend for our customers who want to maximize the energy efficiency of their home, WJHD offers an optimally designed HVAC (Mechanical System) suited specifically to the home, location, and the number of occupants.*

- WJHD recommends Andersen hi-performance, Low-E Windows. (Solar Heat Gain Co-Efficient number, S.H.G.C. near .20 or lower is preferred.)

[NEXT PAGE]

STRUCTURAL ENGINEERING

TASK 4

Signed and Sealed Structural Engineering documents are required to obtain a Building Permit in Florida.

WJHD Structural Engineers require
Our Truss Set of Plans and the Truss
Engineering documents.
For a Permit Ready Set of Plans.

[NEXT PAGE]

COORDINATION

TASK 5

- WJHD coordinates the Builder, Truss Manufacturer, Building Science Mechanical HVAC and the Structural Engineer to ready the set of plans for the Permitting Process.
- WJHD expeditiously answers all pertinent permit rejections to expedite obtaining the Building Permit.
- WJHD teams up with a number of SW Florida builders and structural engineers for a one-stop-shop in obtaining a building permit. Once construction begins, WJHD follows up with site visits as deemed necessary.

[RETURN TO CHART]